

**Anti-Human IgG (H&L) (Biotin Conjugated) Pre-Adsorbed Secondary Antibody**  
**Goat Polyclonal, Biotin**  
**Catalog # ASR2691****Specification****Anti-Human IgG (H&L) (Biotin Conjugated) Pre-Adsorbed Secondary Antibody - Product Information**

Description	<b>Anti-HUMAN IgG (H&amp;L) (GOAT) Antibody</b> <b>Biotin Conjugated (Min X Bv Ch Gt GP Ham</b> <b>Hs Ms Rb Rt &amp; Sh Serum Proteins)</b>
Host	<b>Goat</b>
Conjugate	<b>Biotin</b>
FP Value	<b>10-20 moles Biotin per mole of IgG</b>
Target Species	<b>Human</b>
Reactivity	<b>Human</b>
Clonality	<b>Polyclonal</b>
Application	<b>WB, E, IC</b>
Application Note	<b>ELISA 1:20,000-1:100,000;Western Blot</b> <b>1:2,000-1:10,000;Immunochemistry</b> <b>1:1,000-1:5,000</b>
Physical State	<b>Lyophilized</b>
Host Isotype	<b>IgG</b>
Target Isotype	<b>IgG (H&amp;L)</b>
Buffer	<b>0.02 M Potassium Phosphate, 0.15 M</b> <b>Sodium Chloride, pH 7.2</b>
Immunogen	<b>Human IgG whole molecule</b>
Reconstitution Volume	<b>1.0 mL</b>
Reconstitution Buffer	<b>Restore with deionized water (or</b> <b>equivalent)</b>
Stabilizer	<b>10 mg/mL Bovine Serum Albumin (BSA) -</b> <b>Immunoglobulin and Protease free</b>
Preservative	<b>0.01% (w/v) Sodium Azide</b>

**Anti-Human IgG (H&L) (Biotin Conjugated) Pre-Adsorbed Secondary Antibody - Additional Information****Shipping Condition**

Ambient

**Purity**

Secondary antibody conjugate was prepared from monospecific antiserum by immunoaffinity chromatography using Human IgG coupled to agarose beads followed by solid phase adsorption(s) to remove any unwanted reactivities. Assay by immunoelectrophoresis resulted in a single precipitin arc against anti-biotin, anti-Goat Serum, Human IgG and Human Serum. No reaction was observed against Bovine, Chicken, Goat, Guinea Pig, Hamster, Horse, Mouse, Rabbit, Rat and Sheep Serum Proteins.

**Storage Condition**

Store secondary antibody at 4° C prior to restoration. For extended storage aliquot antibody and freeze at -20° C or below. Avoid cycles of freezing and thawing. Centrifuge product if not

completely clear after standing at room temperature. This product is stable for several weeks at 4° C as an undiluted liquid. Dilute only prior to immediate use.

#### **Precautions Note**

This product is for research use only and is not intended for therapeutic or diagnostic applications.

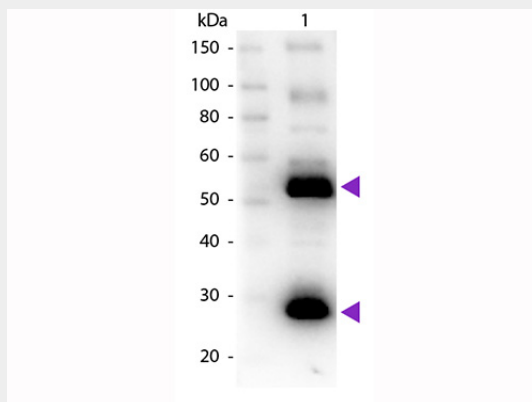
#### **Anti-Human IgG (H&L) (Biotin Conjugated) Pre-Adsorbed Secondary Antibody - Protein Information**

#### **Anti-Human IgG (H&L) (Biotin Conjugated) Pre-Adsorbed Secondary Antibody - Protocols**

Provided below are standard protocols that you may find useful for product applications.

- [Western Blot](#)
- [Blocking Peptides](#)
- [Dot Blot](#)
- [Immunohistochemistry](#)
- [Immunofluorescence](#)
- [Immunoprecipitation](#)
- [Flow Cytometry](#)
- [Cell Culture](#)

#### **Anti-Human IgG (H&L) (Biotin Conjugated) Pre-Adsorbed Secondary Antibody - Images**



Western Blot of Goat anti-Human IgG (Pre-Adsorbed) Biotin Conjugated Secondary Antibody. Lane 1: Human IgG. Lane 2: None. Load: 50 ng per lane. Primary antibody: Biotin conjugated goat anti-Human IgG 1:1,000 for 60 min at RT. Secondary antibody: Peroxidase Streptavidin secondary antibody at 1:40,000 for 30 min at RT. Block: MB-070 for 30 min at RT. Predicted/Observed size: 25 & 55 kDa, 25 & 55 kDa for Human IgG. Other band(s): None.

#### **Anti-Human IgG (H&L) (Biotin Conjugated) Pre-Adsorbed Secondary Antibody - Background**

Secondary Antibodies are ideal for western blot and are available in a variety of formats and conjugate types. When choosing a secondary antibody, consideration must be given to species and immunoglobulin specificity, conjugate type, fragment and chain specificity, level of cross-reactivity, and host-species source and fragment composition